

# Wikidata at The National Library of Wales



WIKIMEDIA

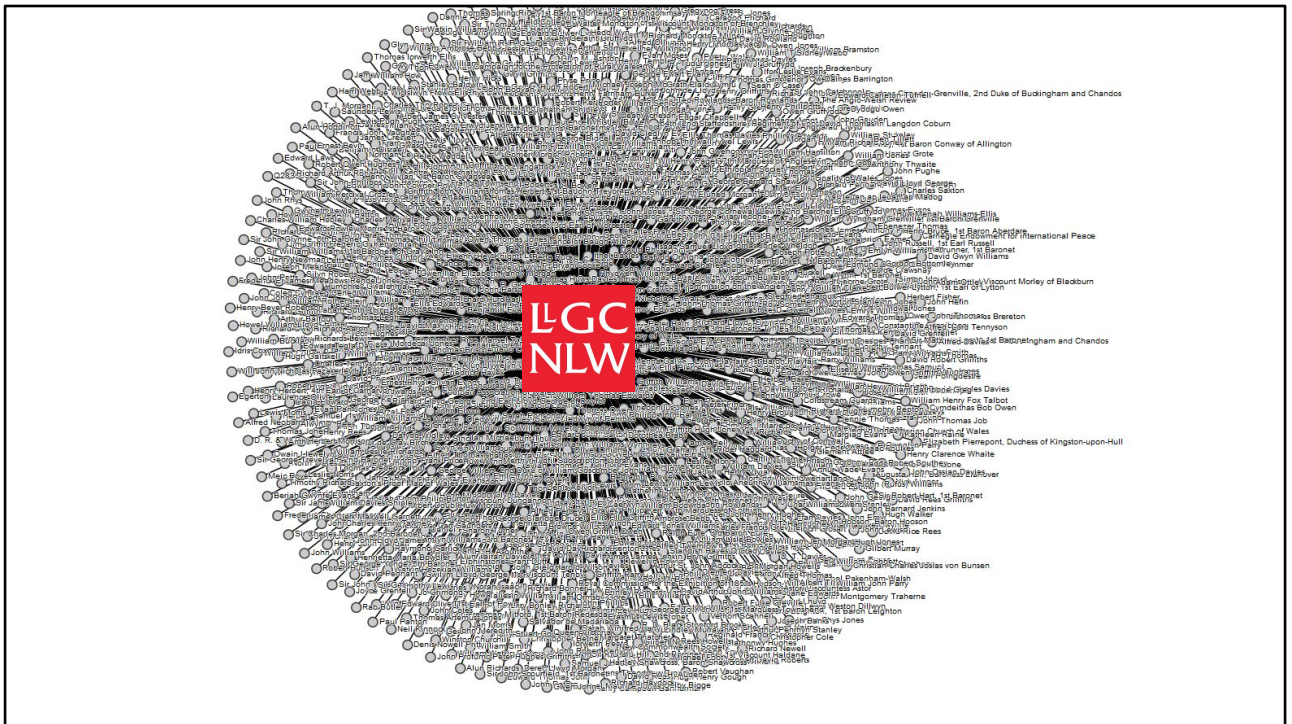
@Wiki\_NLW

LGC  
NLW



Started abt 5 yrs ago when wikidata was very new

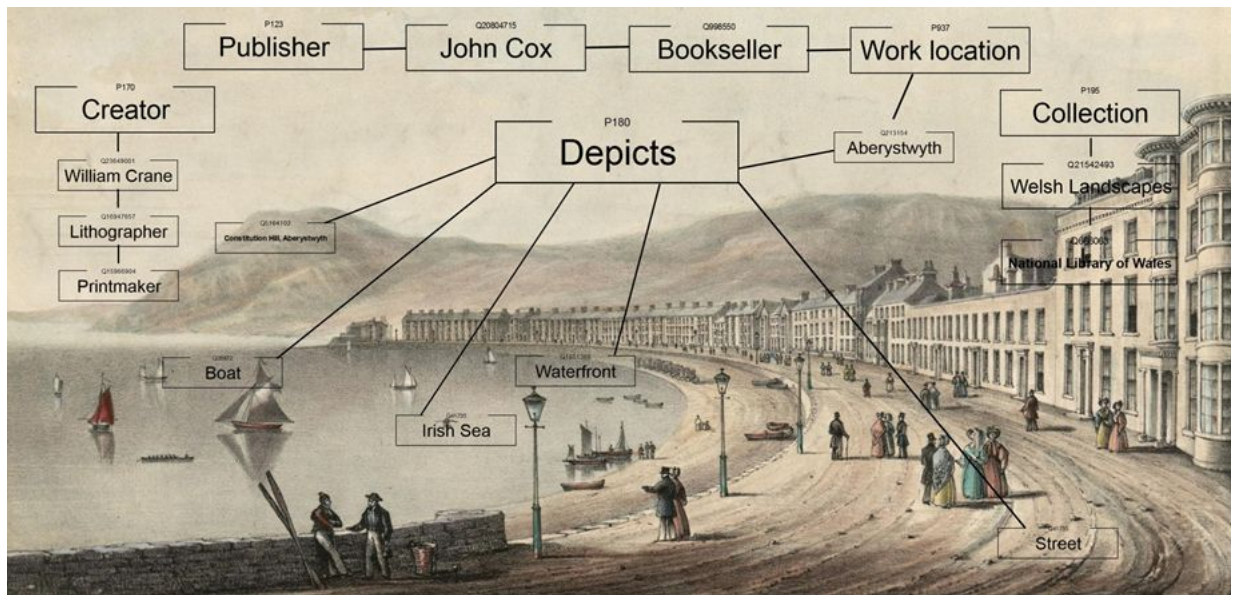
Initially the aim was to use it as a platform to give open access to data - especially data for digital images we were sharing to Commons



We now have lots items on Wikidata about our collections or in some way connected to our collections

Including 15k artworks, 30k books, entries for 5k people in DWB and other smaller datasets

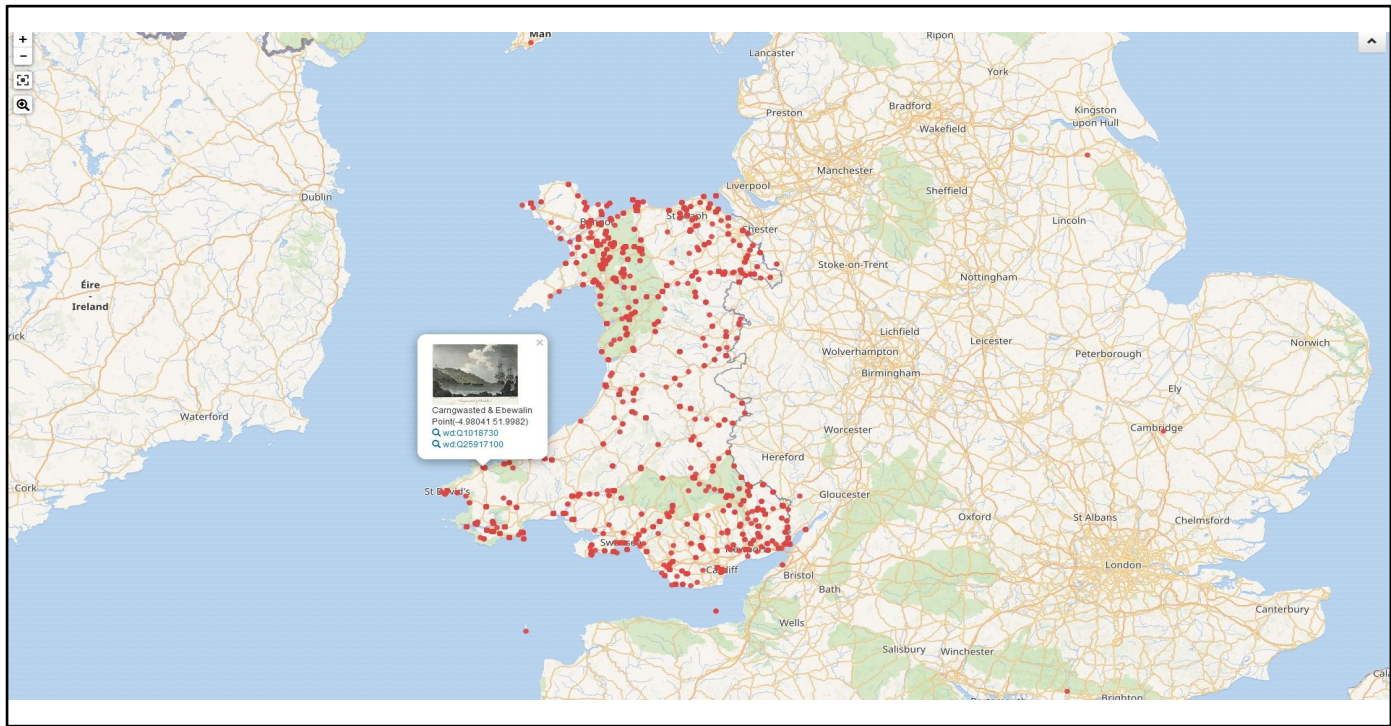
And as the volume of data has increased so to have the connections between our collections, and the collections of other institutions



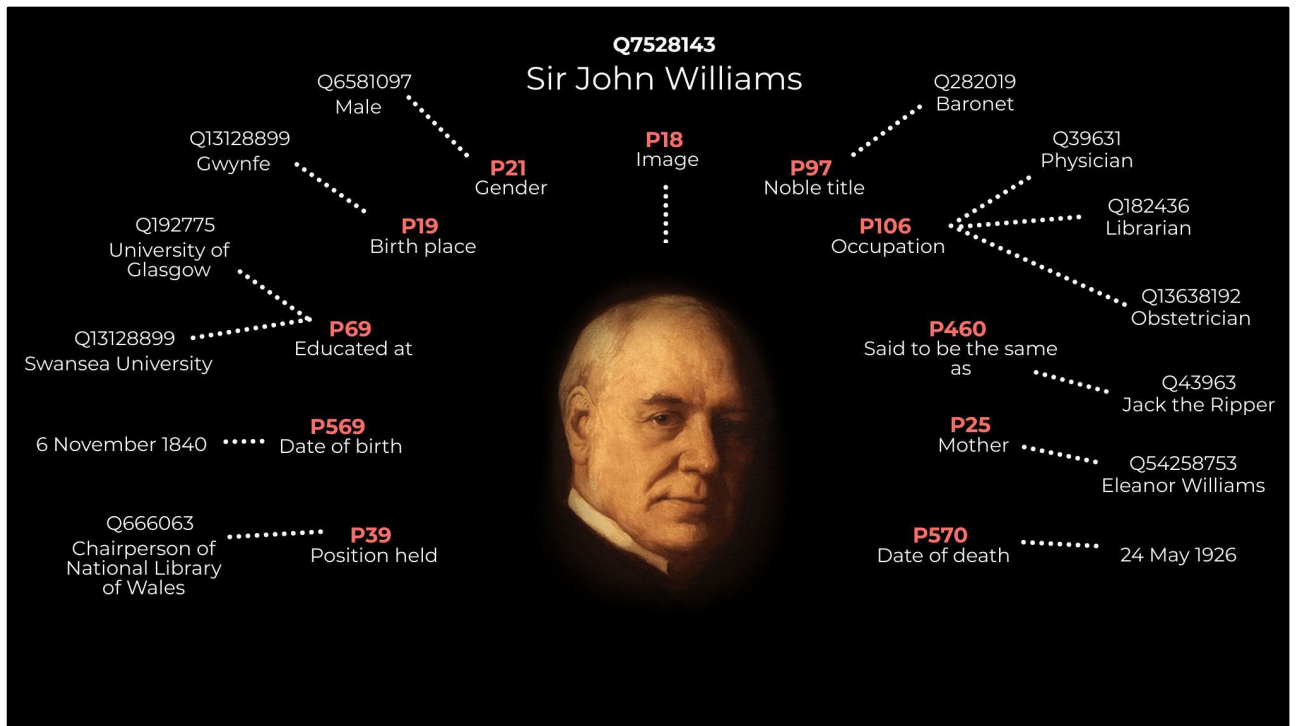
We focused on quality over quantity - extracting as much information as possible from our metadata.

Welsh landscapes



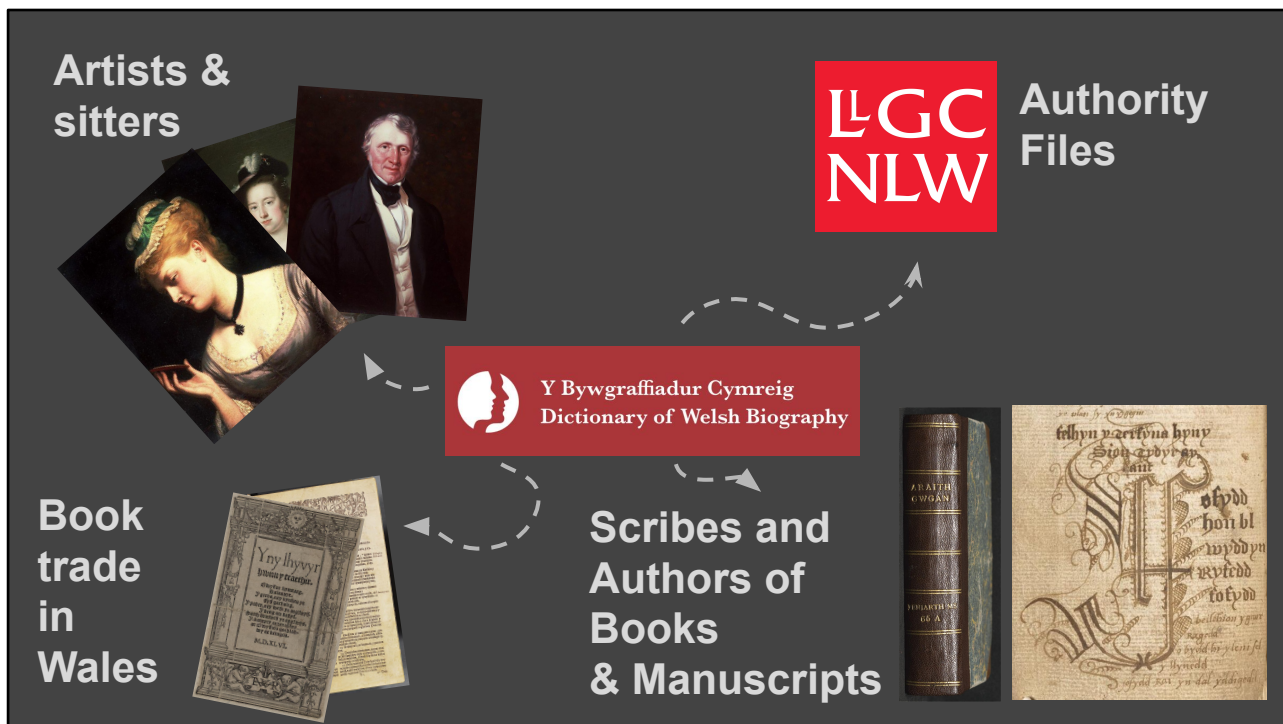


Coordinates. Mapping place name tags to wikidata entities



Dictionary of Welsh Biography

So this is now the kind of data we have for everyone in the DWB



The structured nature of linked data means we can also begin connecting different collections and data sets from the library.

Breaking down scilo's

explain

Oxford DNB entries

1253

426

Archives at NLW

343

Portraits in NPG

222

Gave speech in Parliament

147

Encyclopedia Britannica entry

64

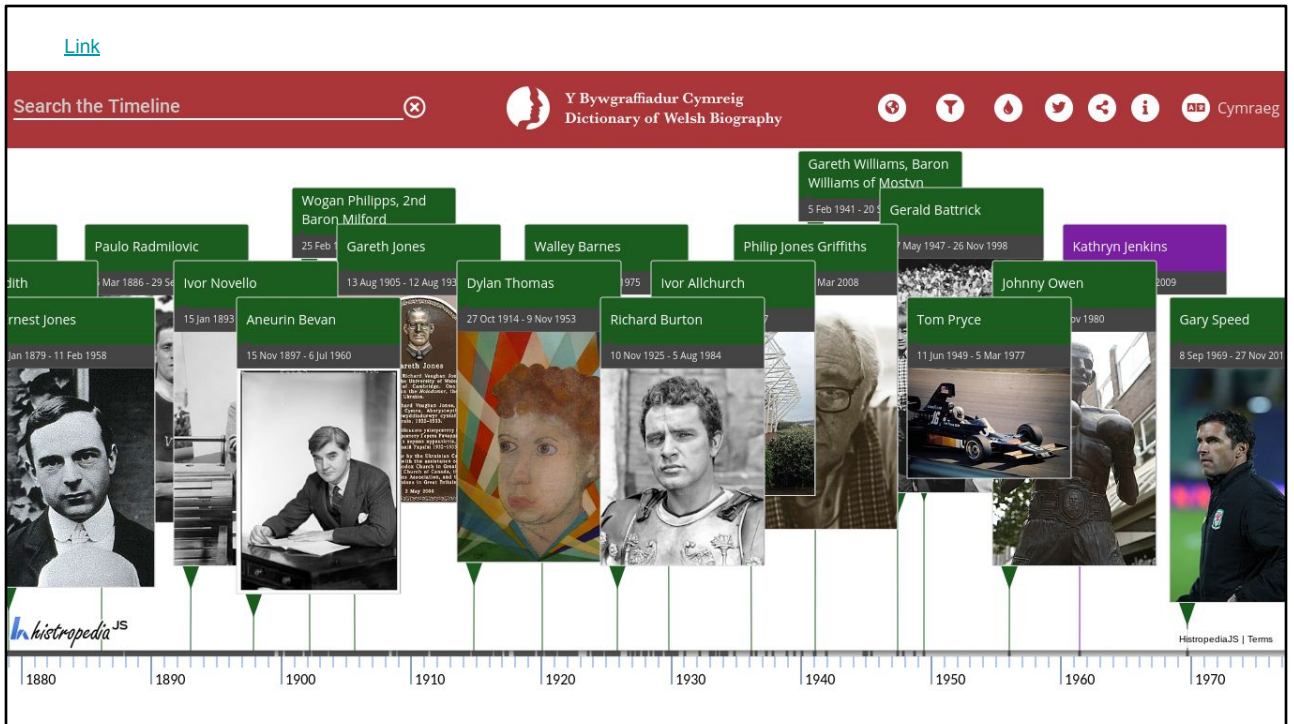
Has commemorative plaque

7

Nobel prize nominations

External collections too.....





Adding links to external resources on DWB website - using Wikidata, and also developed a timeline for searching and filtering content and this uses wikidata, images from commons and wikipedia text.

# Challenges

P170	P31	P276	P195	P186	P136	P180	P180	P180	P180	P186	P186	P186	P186	P195	P571
Q318584	Q18761202	Q666063	Q78231766	Q11472	Q191163	Q472667	Q1075310	Q283202		Q165447	Q127418	Q22915256	Q666063	1797-00-00T00:00:00Z/9	
Q318584	Q18761202	Q666063	Q78231766	Q11472	Q191163	Q25907426	Q4022			Q165447	Q127418	Q22915256	Q666063	1797-00-00T00:00:00Z/9	
Q318584	Q18761202	Q666063	Q78231766	Q11472	Q191163	Q213154	Q330284	Q726	Q134308	Q165447	Q127418	Q22915256	Q666063	1797-00-00T00:00:00Z/9	
Q318584	Q18761202	Q666063	Q78231766	Q11472	Q191163	Q7085450	Q771986	Q3947	Q4022	Q165447	Q127418	Q22915256	Q666063	1797-00-00T00:00:00Z/9	
Q318584	Q93184	Q666063	Q78231766	Q11472	Q191163	Q756830				Q165447	Q127418		Q666063	1797-00-00T00:00:00Z/9	
Q318584	Q93184	Q666063	Q78231766	Q11472	Q191163	Q17737137	Q12280	Q4022		Q165447	Q127418		Q666063	1797-00-00T00:00:00Z/9	
Q318584	Q18761202	Q666063	Q78231766	Q11472	Q191163	Q3947	Q8502	Q100279	Q104365	Q165447	Q127418	Q22915256	Q666063	1797-00-00T00:00:00Z/9	
Q318584	Q18761202	Q666063	Q78231766	Q11472	Q191163	Q1043657	Q1002793			Q165447	Q127418	Q22915256	Q666063	1797-00-00T00:00:00Z/9	
Q318584	Q18761202	Q666063	Q78231766	Q11472	Q191163	Q1043657	Q1002793			Q165447	Q127418	Q22915256	Q666063	1797-00-00T00:00:00Z/9	
Q318584	Q18761202	Q666063	Q78231766	Q11472	Q191163	Q39816	Q34442	Q4022		Q165447	Q127418	Q22915256	Q666063	1797-00-00T00:00:00Z/9	
Q318584	Q18761202	Q666063	Q78231766	Q11472	Q191163	Q2509240	Q109607	Q833418		Q165447	Q127418	Q22915256	Q666063	1797-00-00T00:00:00Z/9	
Q318584	Q18761202	Q666063	Q78231766	Q11472	Q191163	Q3090852	Q8441	Q467		Q165447	Q127418	Q22915256	Q666063	1797-00-00T00:00:00Z/9	
Q318584	Q18761202	Q666063	Q78231766	Q11472	Q191163	Q2311675	Q79007	Q726	Q234668	Q165447	Q127418	Q22915256	Q666063	1797-00-00T00:00:00Z/9	
Q318584	Q18761202	Q666063	Q78231766	Q11472	Q191163	Q34038	Q3947	Q10884		Q165447	Q127418	Q22915256	Q666063	1797-00-00T00:00:00Z/9	
Q318584	Q18761202	Q666063	Q78231766	Q11472	Q191163	Q756830				Q165447	Q127418	Q22915256	Q666063	1797-00-00T00:00:00Z/9	
Q318584	Q18761202	Q666063	Q78231766	Q11472	Q191163	Q756830				Q165447	Q127418	Q22915256	Q666063	1797-00-00T00:00:00Z/9	
Q318584	Q93184	Q666063	Q78231766	Q11472	Q191163	Q756830				Q165447	Q127418		Q666063	1797-00-00T00:00:00Z/9	
Q318584	Q18761202	Q666063	Q78231766	Q11472	Q18811686	Q756830	Q109607			Q165447	Q127418	Q22915256	Q666063	1797-00-00T00:00:00Z/9	
Q318584	Q18761202	Q666063	Q78231766	Q11472	Q191163	Q2653611	Q3947	Q34442	Q12280	Q165447	Q127418	Q22915256	Q666063	1797-00-00T00:00:00Z/9	
Q318584	Q18761202	Q666063	Q78231766	Q11472	Q191163	Q2653611	Q3947	Q34442		Q165447	Q127418	Q22915256	Q666063	1797-00-00T00:00:00Z/9	
Q318584	Q18761202	Q666063	Q78231766	Q11472	Q191163	Q275128	Q35872	Q1075310		Q165447	Q127418	Q22915256	Q666063	1797-00-00T00:00:00Z/9	
Q318584	Q93184	Q666063	Q78231766	Q11472	Q191163	Q791811	Q4022	Q256020	Q726	Q165447	Q127418		Q666063	1797-00-00T00:00:00Z/9	
Q318584	Q18761202	Q666063	Q78231766	Q11472	Q191163	Q44494	Q34442	Q4022		Q165447	Q127418	Q22915256	Q666063	1797-00-00T00:00:00Z/9	
Q318584	Q18761202	Q666063	Q78231766	Q11472	Q191163	Q383379	Q791811	Q12280		Q165447	Q127418	Q22915256	Q666063	1797-00-00T00:00:00Z/9	

The main challenge - technical aspect of mapping data to wikidata

Documentation is getting much better but it can still be difficult to understand how to process and upload large datasets. I mainly work with spread sheats but other use open refine a lot or if you speak languages like pythons there are there ways to do things.

It can also be a challange to to ensure you are describing things correctly. Wikidata has great guidance on which properties to use to describe art works for example - but guidance for some other types of content like manuscripts was less developed

You may need to make requests for new properties to be created for example.



# Opportunities

With more time or money the possibilities for Wikidata are immense

A number of ideas and early concepts we would like to take forward





Volunteer task to tag wikidata entities depicted in our collections using IIF annotations and storing on Wikidata

Previous Image

Next Image →



Tag 'things' on page

✕

Move the red box to draw box around objects or 'things' that appear in the photograph and tag them (i.e. say what they are). For example cars, people, trees, building, chimney etc.

Please select a region on the page

Start typing to find a relevant tag. ?

bridge

structure built to span physical obstacles

card game

room or platform from which a ship can be commanded

fixed dental restoration used to replace missing teeth by joining an artificial tooth definitively to adjacent teeth or dental implants

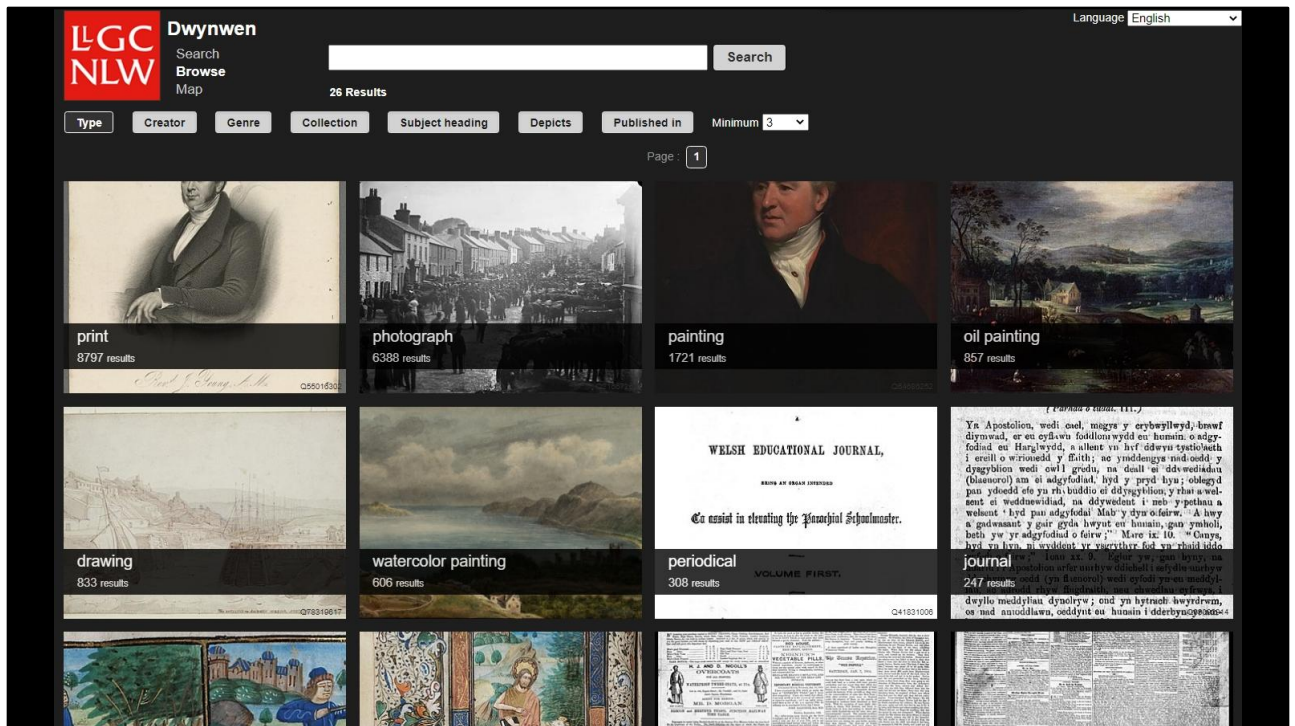
an elevated road or railway or section thereof

Flag as inappropriate

✓ Mark as complete

Developing further and encourperating this into our own crowdsourcing platform.

With more time this could be developed further, we could explore the use of AI to identify and tag wikidata entities in images and text - giving us access to the wealth of data and connections those entities contain.



This is our linked data image browser which is based on an existing website called croto which has been adapted to search all visual content from the NLW on Commons and Wikidata.

We want to develop this idea to offer our users new and improved ways of searching, discovering and just exploring our digital assets, and ultimately we want to have our own tripple store, or linked data which can interact with wikidata so that we can offer users services which are powered both by our authoritative metadata but also the wealth of extra data that can be added through Wikidata.



WIKIMEDIA

@Wiki\_NLW



LGC  
NLW